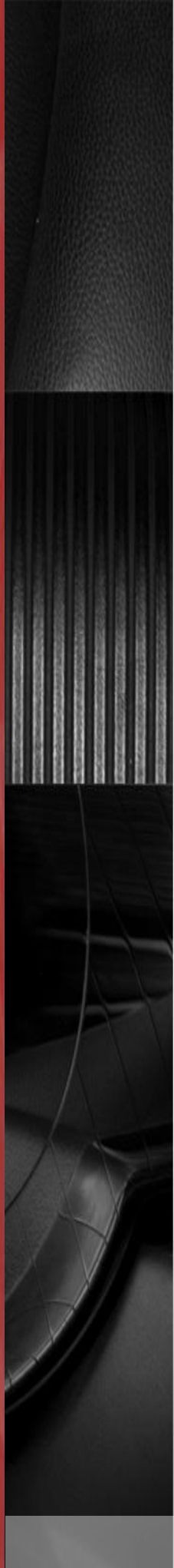


F600

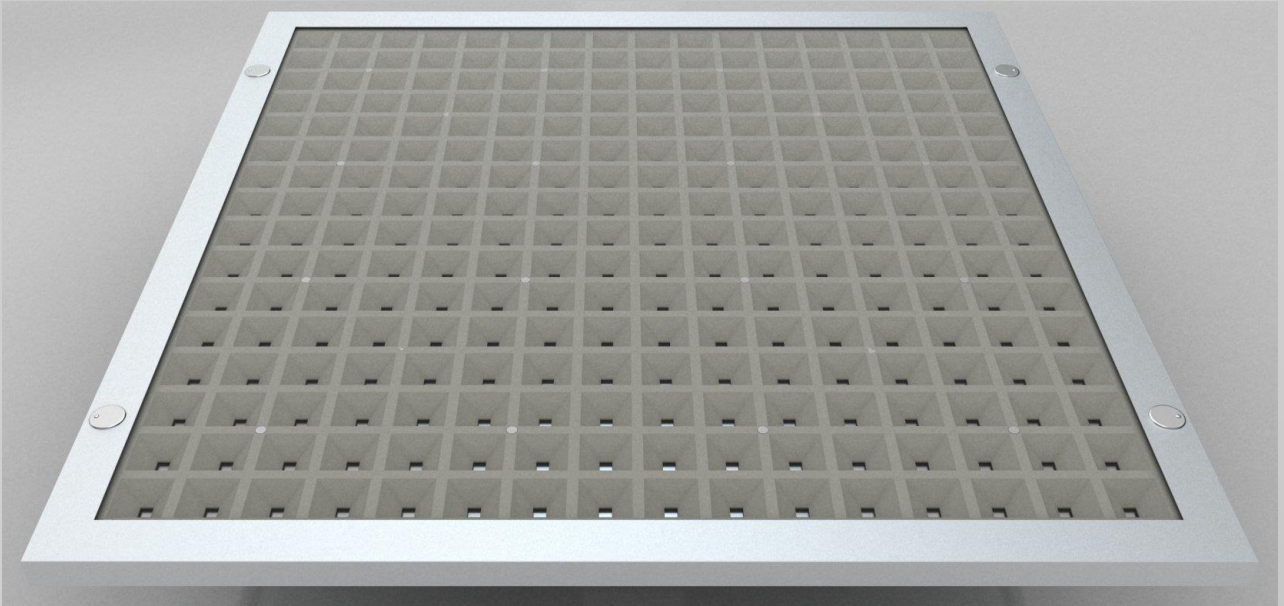
BMS lighting automation
<http://jeongosc.wix.com/standbyzero>

2014

LED FIXTURE



▪ TOP



▪ BOTTOM

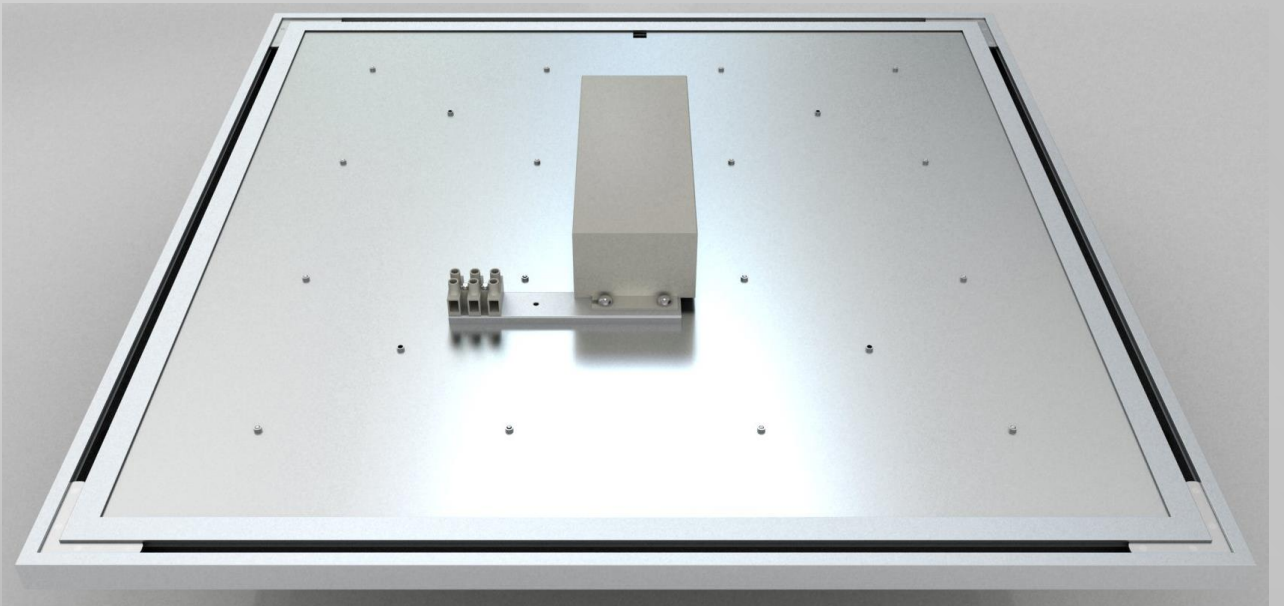
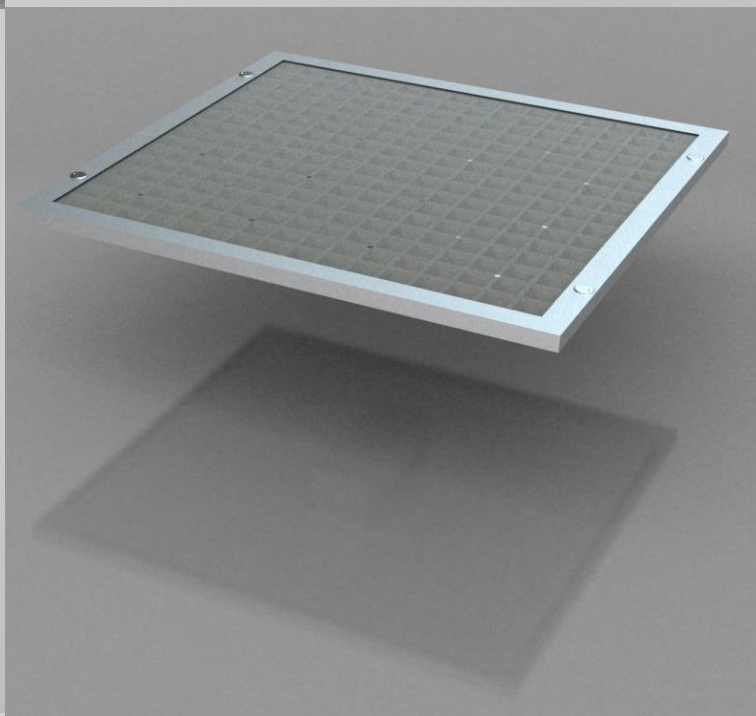


TABLE OF CONTENTS

1. FEATURES
2. PCB OUTLINE DIMENSIONS
3. PARTS LIST
4. PCB (LED LAYOUT PATTERN)
5. SMPS
6. LED LUMINAIRE MARKING & PACKAGE RANK INFORMATION
7. OPTICAL CHARACTERISTIC
8. ELECTRICAL CHARACTERISTIC
9. IES PATTERN
10. DRAWING
11. PACKAGE AND MARKING OF PRODUCTS



FEATURES / OUTLINE DIMENSIONS

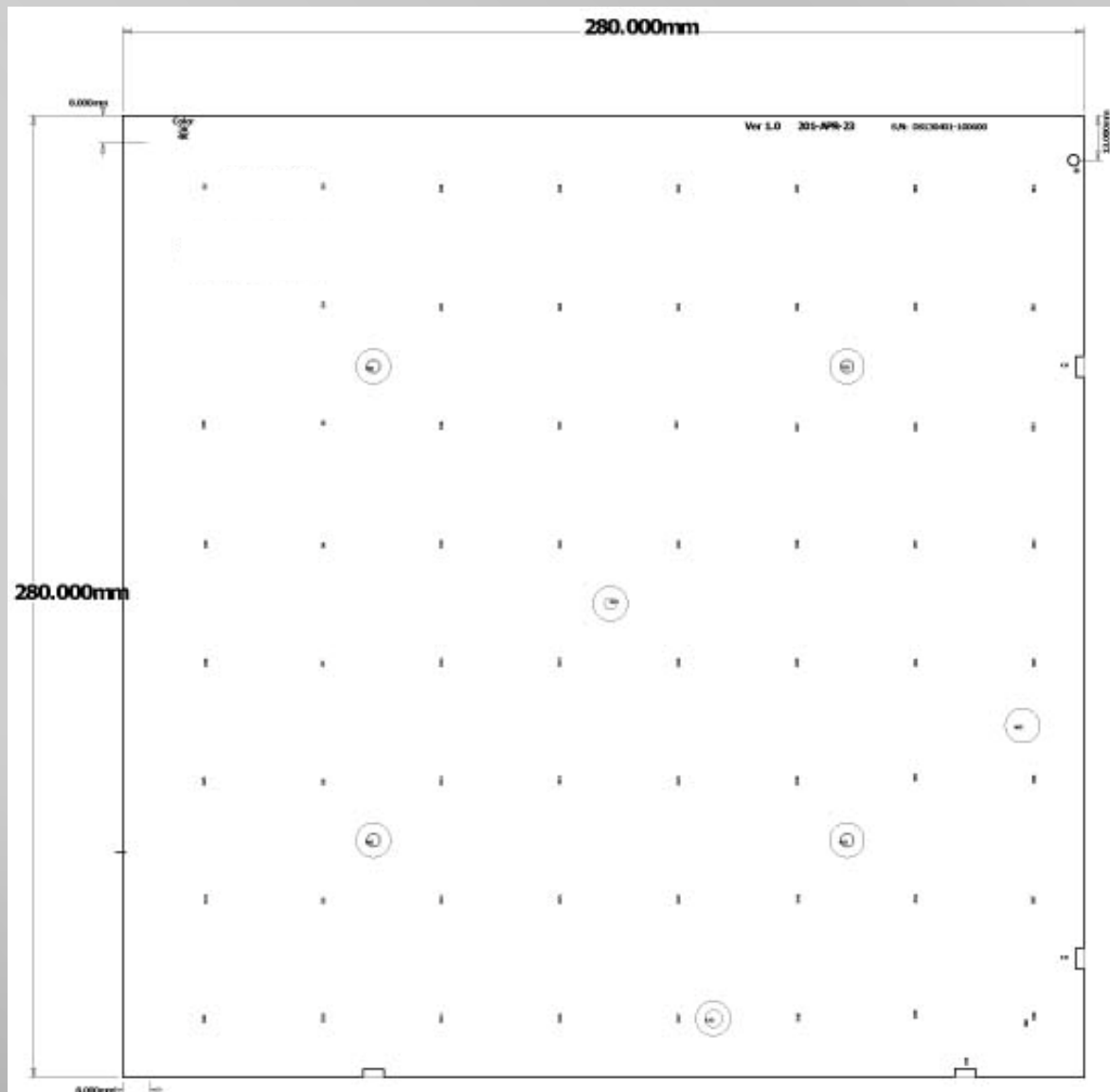
1. FEATURES

- LED luminaire
- This luminaire LED is used for light application
- Material : FR4, Double side
- PCB coating color : White

2. PCB OUTLINE DIMENSIONS

- 2-1 LED PCB Dimensions (Unit : mm) (Dim : 285 x 285 x 1.2T, 1.0T)

Silk And Location



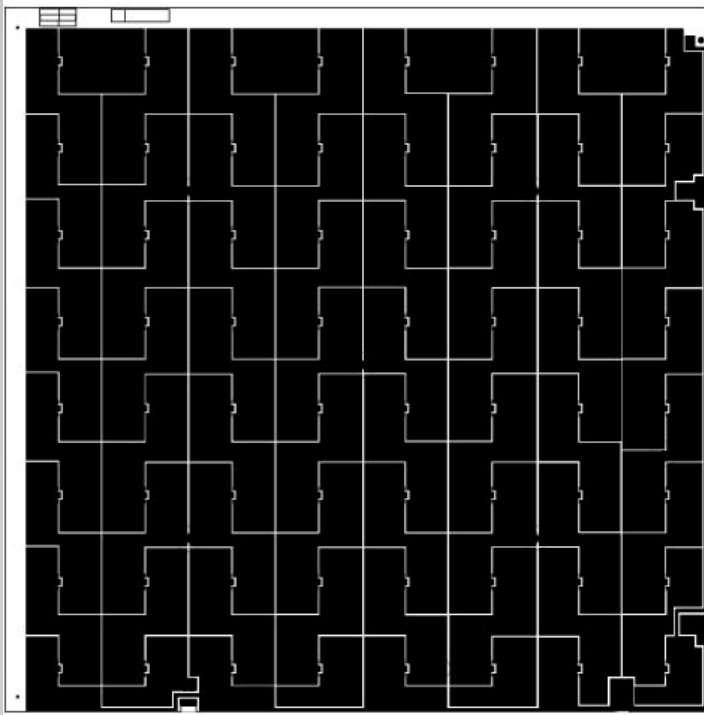
3. PARTS LIST

Item	Spec
LED	Seoul Semiconductor STW8Q14C 4000K
PCB	1.2T 1OZ
SMPS	150W, 54Vdc
Heat-sink	AL 6063 Plate (1.2T)
Reflector	Heat-resisting ABS (1T)
Diffuser	PolyPropylene (1.5T)
Profile	Aluminum Extrusion
Terminal Bracket	AL (1.2T)
Corner Bracket	SECC (2T)
Insert Screw	Still
Set Screw	Still
Plastic Screw	Plastic 3x10 (flat headed bolt)
Screw (SMPS 고정용)	Still trust type 4x6
Connector (전원 단자)	Yeon ho YW396-02V
Screw (단자 고정용)	Still 3x20
Screw (천장 설치용)	Still 4.2x16 (washer Type)
Corner Protect	Plastic or Paper
BOX	BF

Specifications are subject to change without prior notice for improvement of performance.

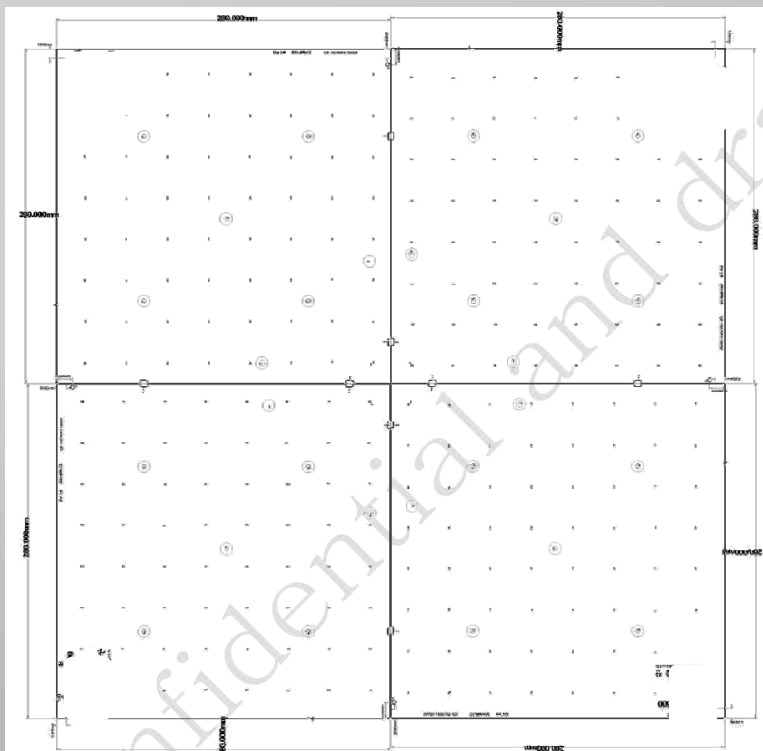
4. PCB PATTERN

- Drawing Top side



- Board Assembly

(This model LED PCB has 4 PCS individually. 1 board has about 25W rate.)

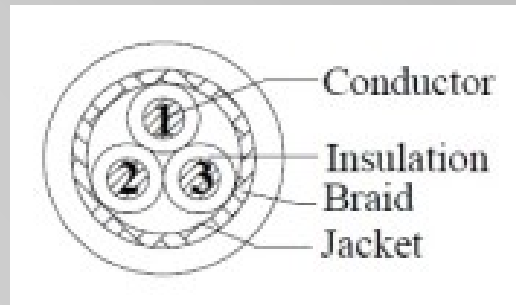


5. SPECIFICATION

- Model Name : SP15003F
- SMPS DC output DC54V/1.8A(MAX)
- Rated input voltage : AC100V/AC240V
- Variable input voltage range : AC90V - AC277V
- Frequency range : 54Hz - 66Hz
- Rated Frequency : 50Hz / 60Hz
- Input Current : 1.2A Max /AC90V ,0.5A Max /AC220V

5-1. CONNECTOR & PIN CONFIGURATION

- INPUT Connection
- INPUT : [AWG #18_* 3C CABLE] / L=Brown, N=Bluesky, F.G=Green / Yellow
- L=250mm



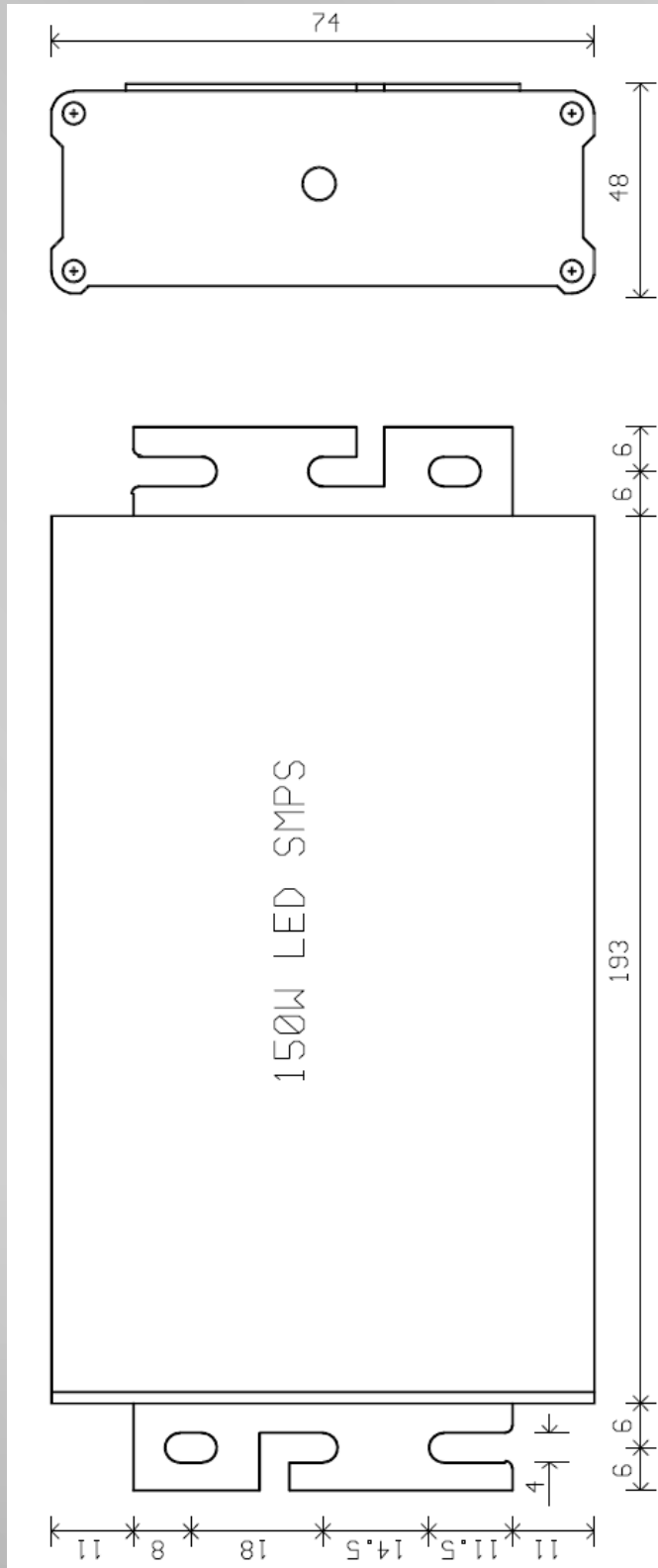
5-2. OURPUT CONNECTION

- Output : [AWG #22 + 3C CABLE] / V+=RED, V-=BLACK
- L=250mm
- CONNECTOR

SMPS FEATURES

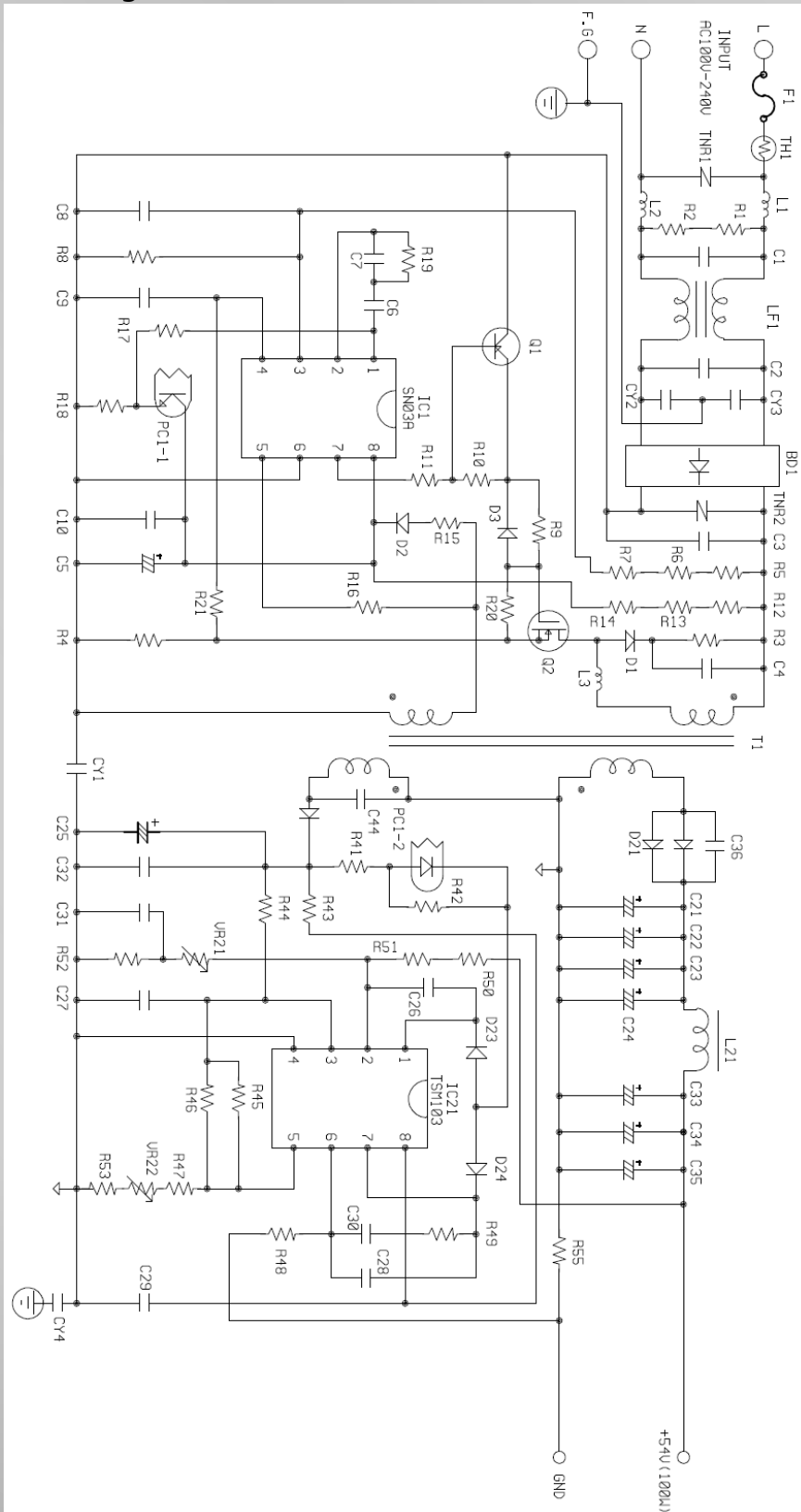
5-3. MECHANICAL DRAWING

- Dimension (L.W.H) = 193 x 74 x 48 (mm)



5-4. SMPS SPECIFICATION

- Schematic Diagram

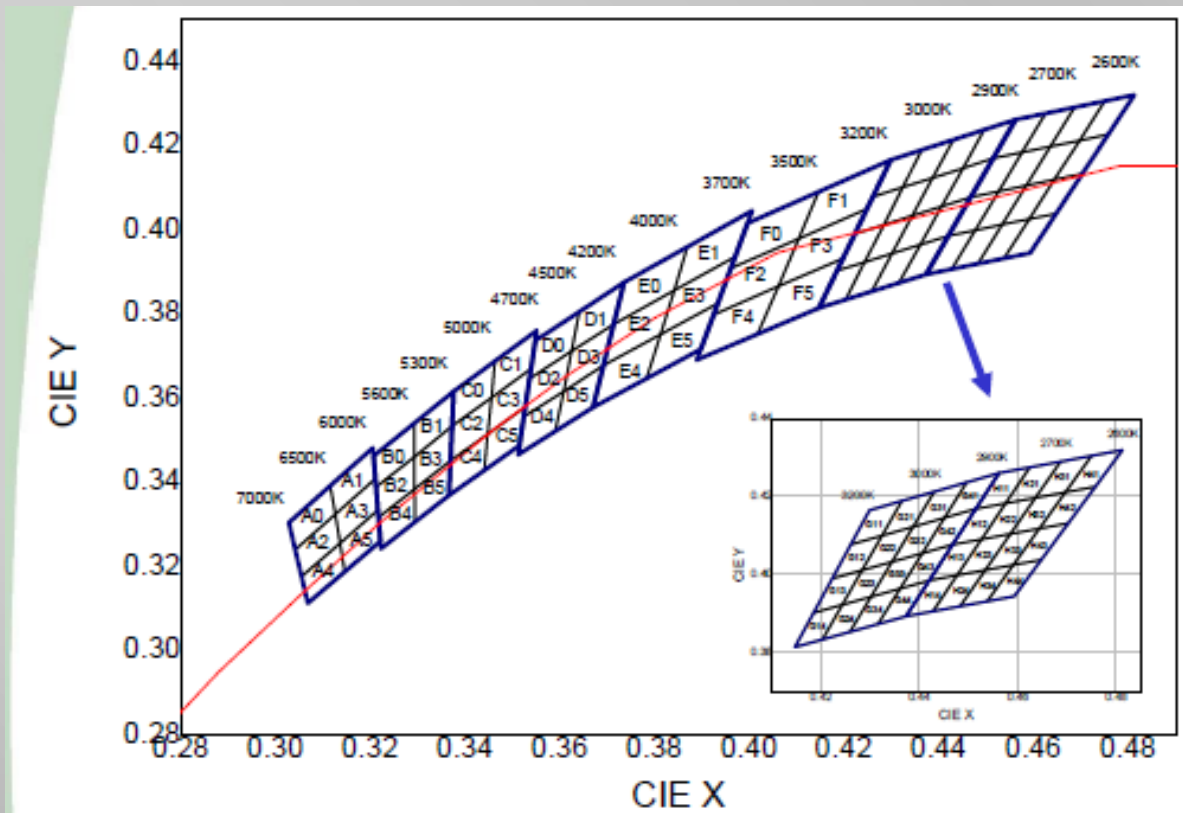


LED LUMINAIRE MARKING & PACKAGE RANK INFORMATION

6-1. LED Luminaire Marking

SIZE		LED PACKAGE	CRI	CCT	YEAR	WEEK	
Longitudinal 50	Width 30	S=Seoul Semiconductor	9=90 Class	35	3500	A=2013	12=12 th / Total 52 weeks
				42	4200		
			8=83 Class	45	4500	B=2014	
				50	5000	C=2015	

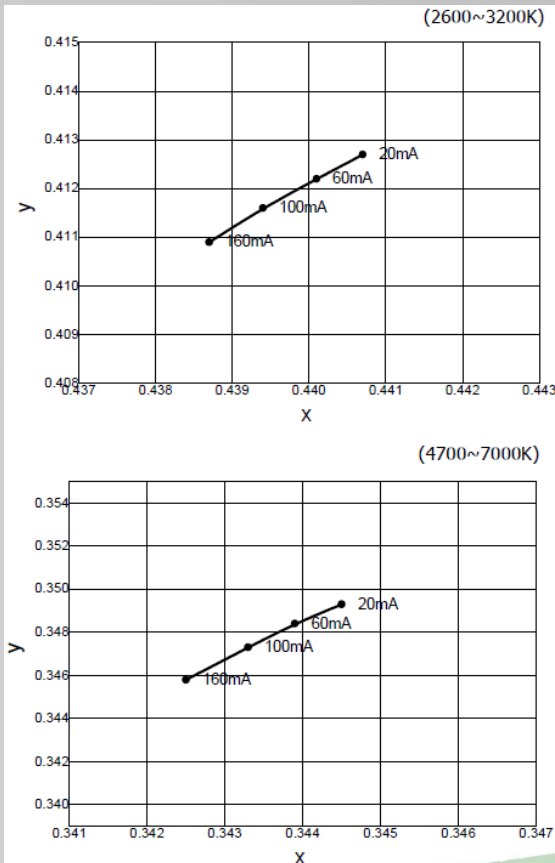
6-2. LED Rank Information



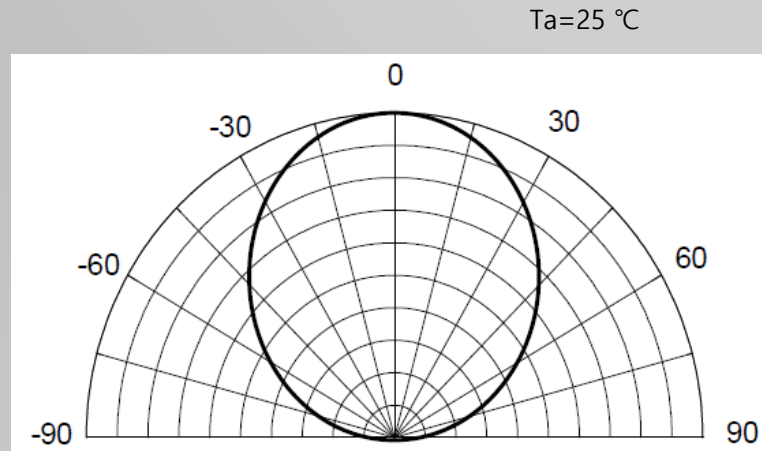
LED SPECIFICATION

7. LED ELECTRO-OPTICAL CHARACTERISTICS

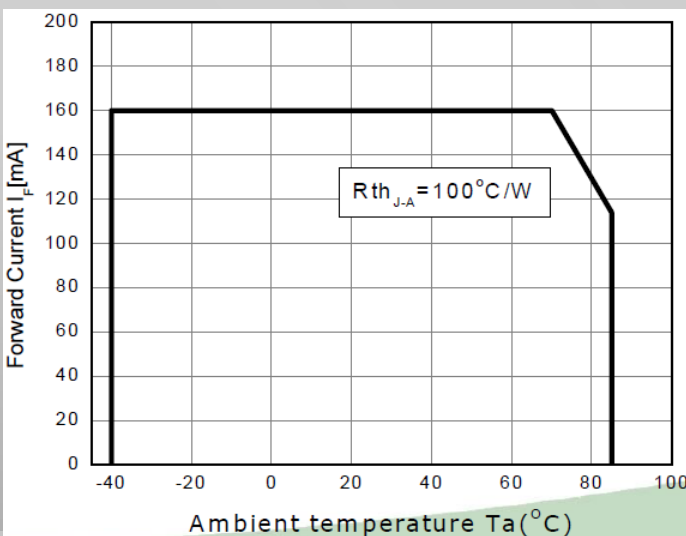
Chromaticity Coordinate vs. Forward Current, $T_a=25^\circ\text{C}$



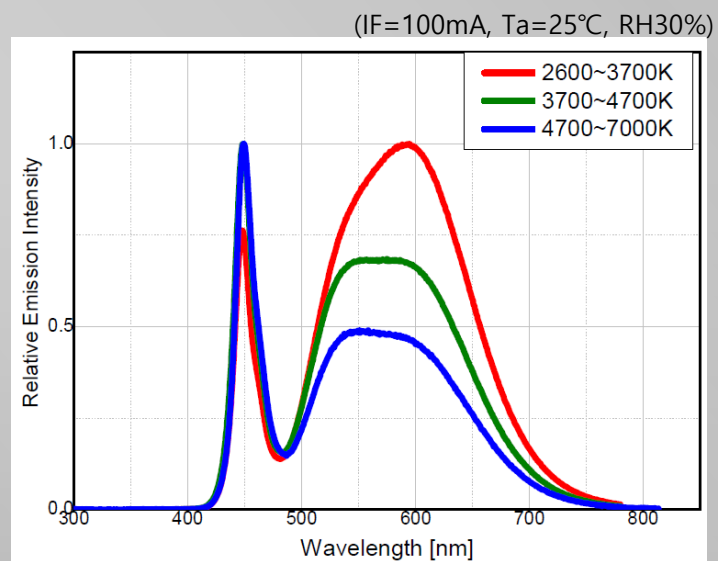
Directivity



Ambient Temperature vs. Maximum Forward Current



Spectrum



8. ELECTRICAL CHARACTERISTIC

1) Electro-Optical characteristics at 100mA

(Ta=25°C, RH30%)

Parameter	Symbol	Value			Unit
		Min	Typ	Max	
Forward voltage*	V _F	2.9	-	3.4	V
Reverse voltage	V _R	-	0.9	1.2	V
Luminous Intensity*(1) (3700 ~ 7000K)	I _v	-	13.6 (42.2)	-	cd lm
Luminous Intensity*(1) (2600 ~ 3700K)	I _v	-	12.3 (37)	-	
Color Correlated Temperature	CCT	2,600	-	7,000	K
Viewing Angle(2)	2θ _½	-	120	-	-
Color Rendering Index*	Ra	80	-	90	-
Thermal resistance(3)	R _{thJS}	-	18	-	°C/W

*Notes :

All measurements were made under the standardized environment of SSC.

[1] The luminous intensity I_v was measured at the peak of the spatial pattern which may not be aligned with the mechanical axis of the LED package.[2] 2θ_{1/2} is the off-axis where the luminous intensity is 1/2 of the peak intensity.[3] Thermal resistance: R_{thJS} (Junction / solder)* Tolerance : V_F :±0.1V, I_v :±7%, Ra :±2, x,y :±0.007

2) Absolute Maximum Ratings

Parameter	Symbol	Value	Unit
Forward Current	I _F	160	mA
Power Dissipation*[1]	P _d	560	mW
Junction Temperature	T _j	125	°C
Operating Temperature	T _{opr}	-40 ~ +85	°C
Storage Temperature	T _{stg}	-40 ~ +100	°C
ESD (HBM)		±5,000V HBM	V

*Notes :

LED's properties might be different from suggested values like above and below tables if operation condition will be exceeded our parameter range.

[1] Care is to be taken that power dissipation does not exceed the absolute maximum rating of the product.

9. LUMINAIRE IES PATTERN

4 Module System

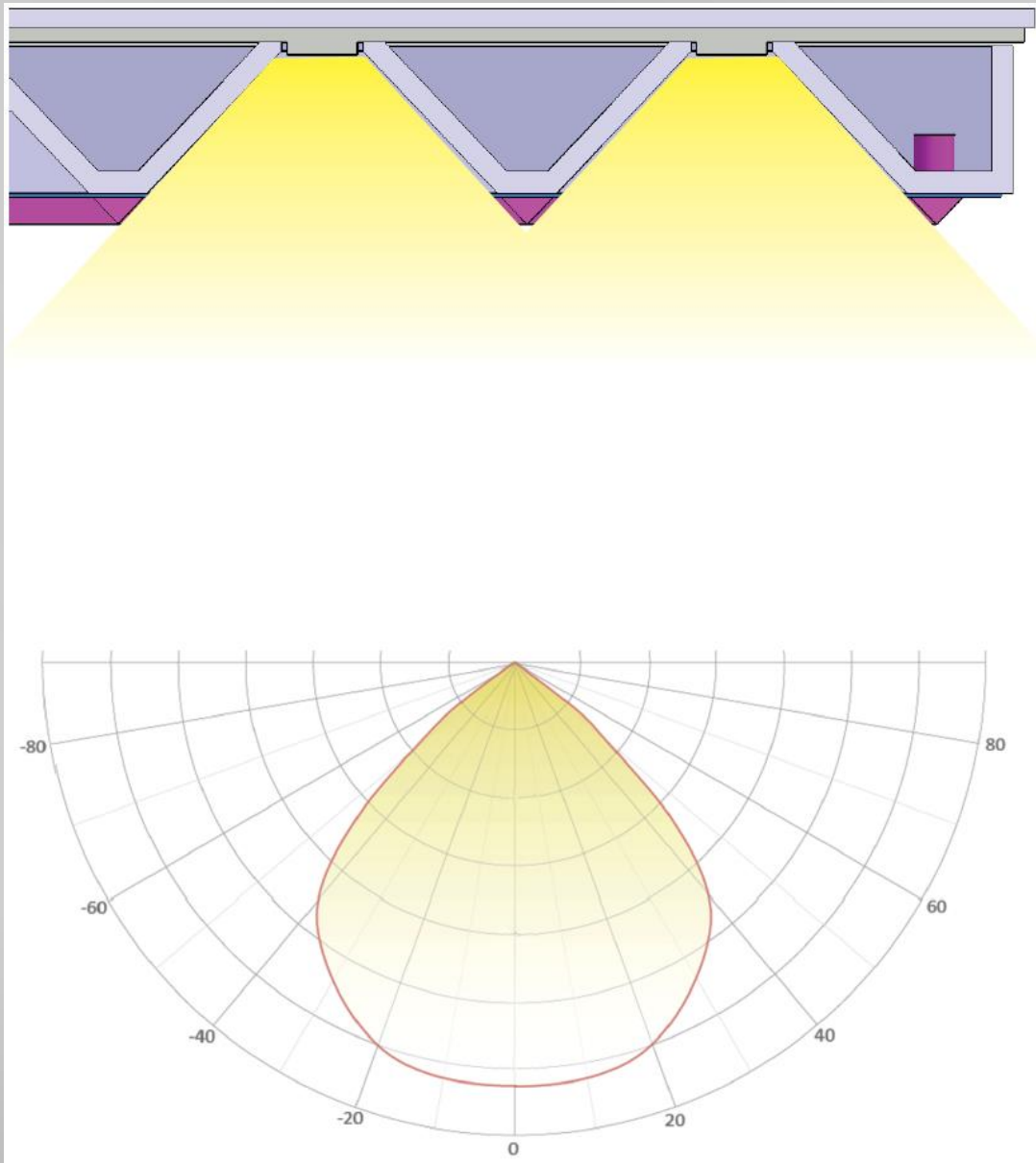
64Hole x 4 = 256 LED = 94W

10,000lm

PF=0.98

3000K/4000K(Optional), Ra: 85

Dimensions: 610x610x18(mm)

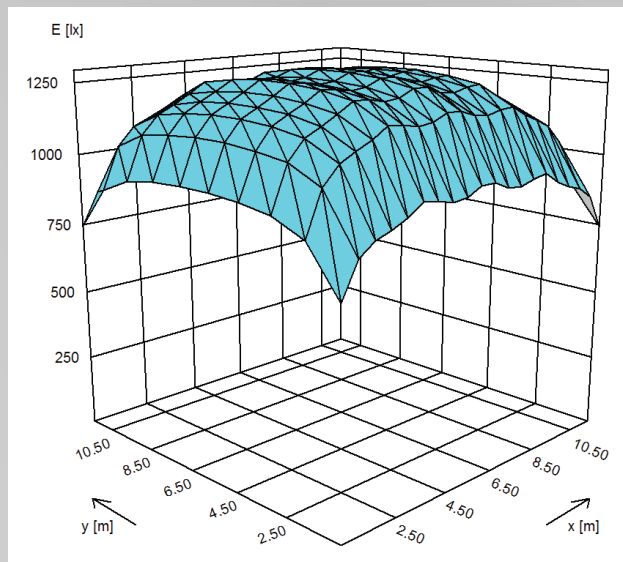
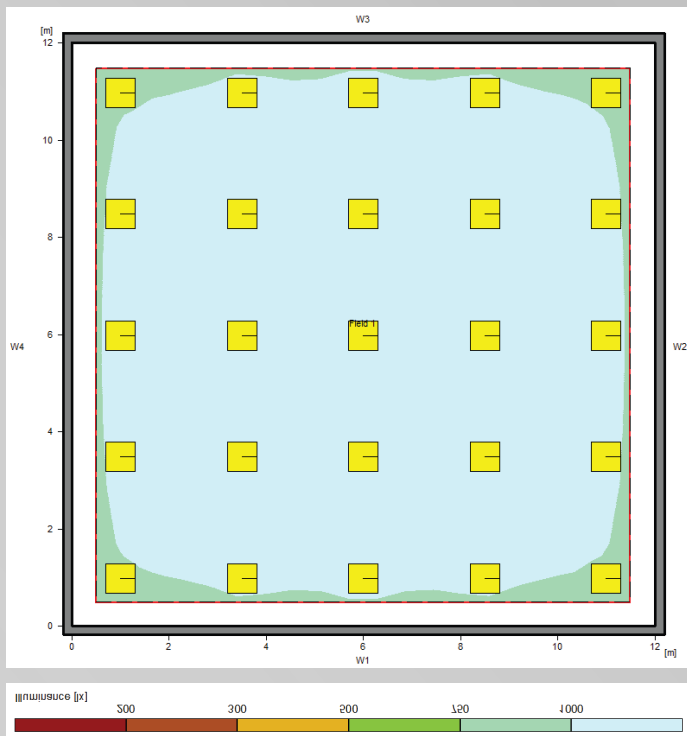


IES PATTERN

9-1. LUMINAIRE IES PATTERN SIMULATION

Space between luminaires 2.5M

Installation height 3.5M



Illuminance

Average illuminance

Minimum illuminance

Maximum illuminance

Uniformity g1

Uniformity g2

Eav 1130 lx

Emin 743 lx

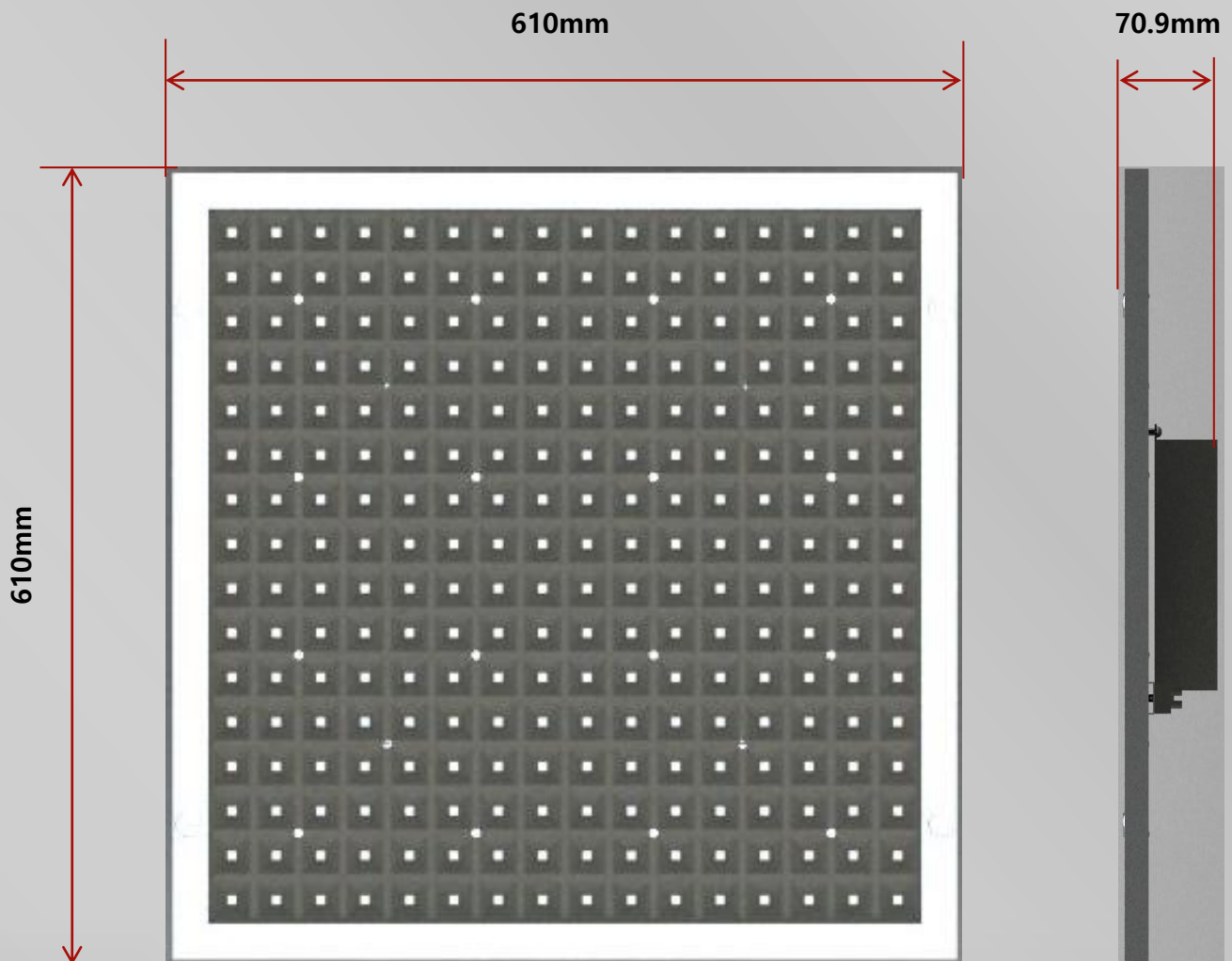
Emax 1290 lx

Emin/Em 1:1.52 (0.66)

Emin/Emax 1:1.74 (0.57)

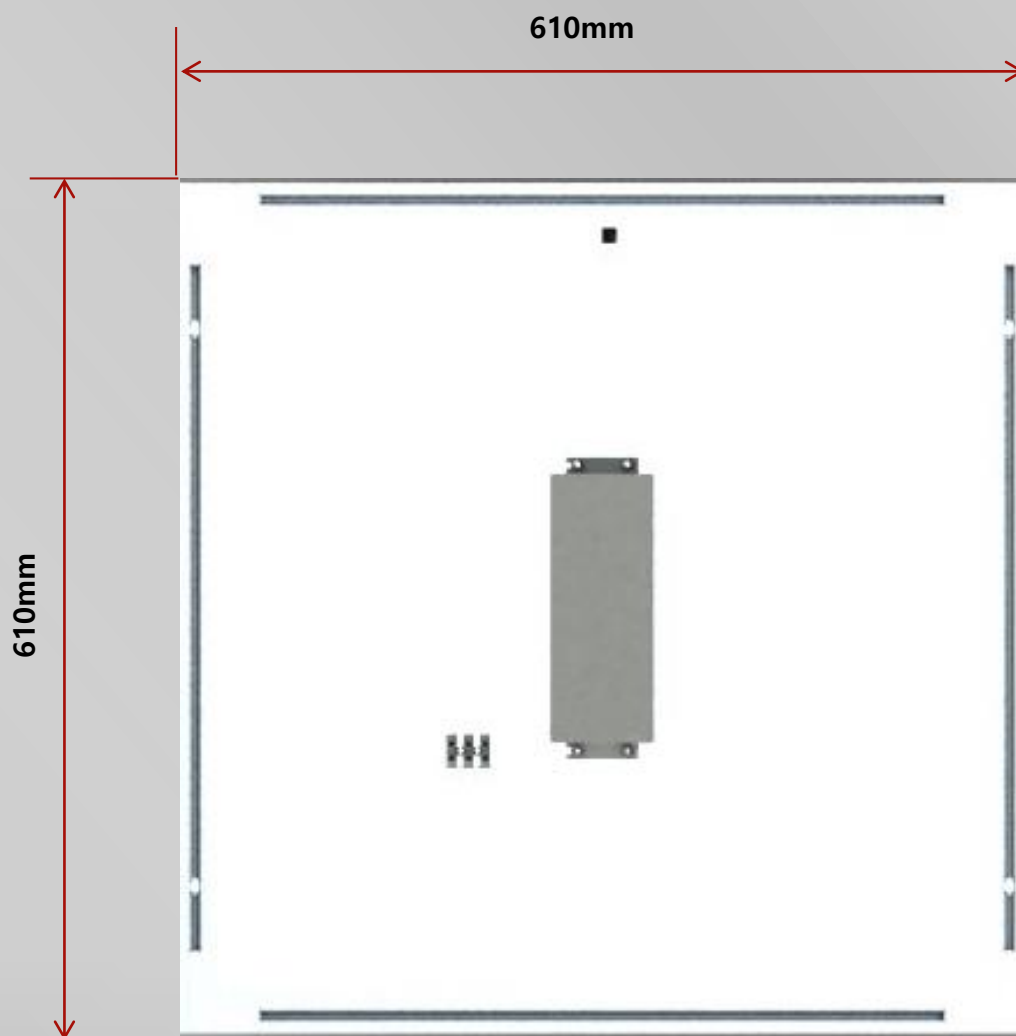
10. LUMINAIRE DRAWING

- 600 x 600 Module
Front View



10. LUMINAIRE DRAWING

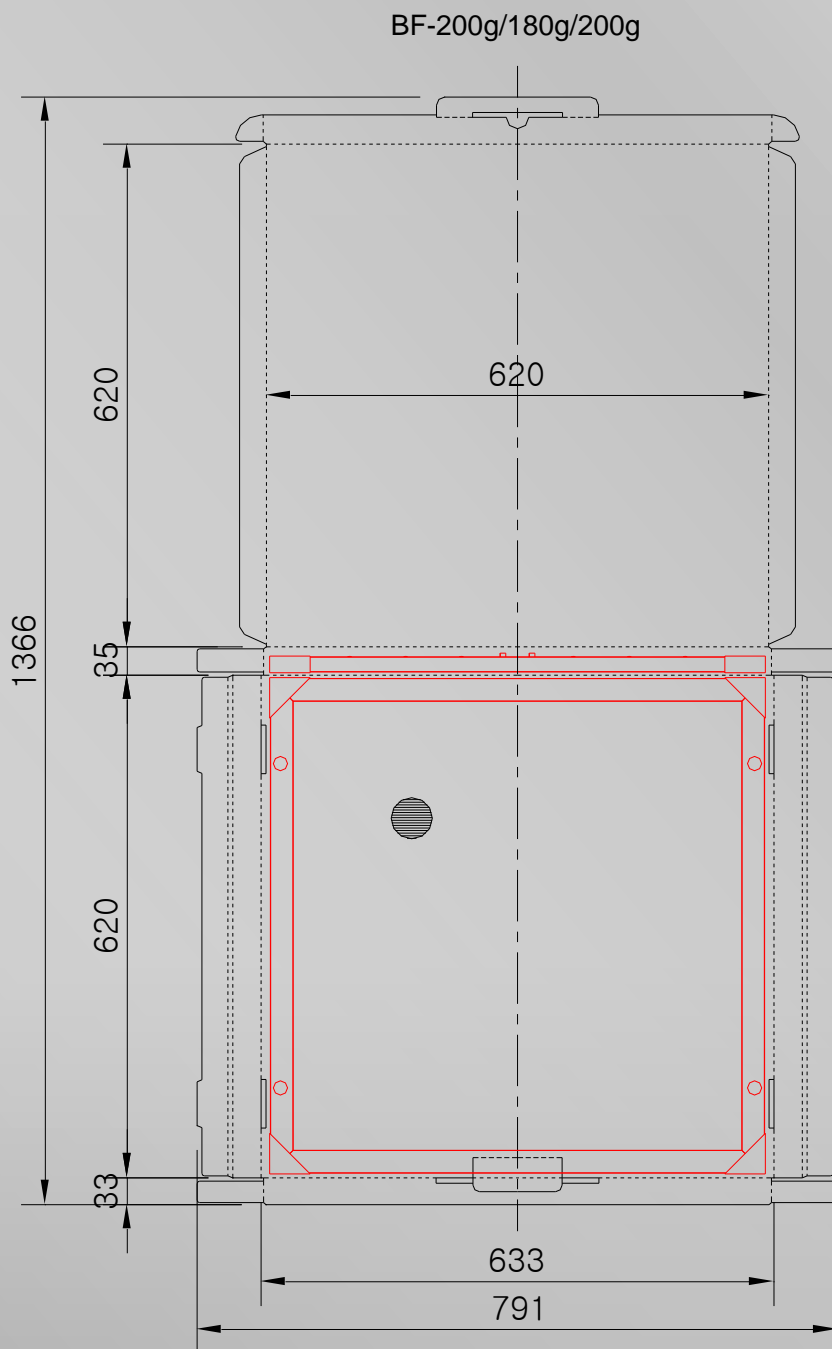
- 600 x 600 Module (Heat-Sink Type 1 : Light weight version)
Back View



11. PACKAGE AND MARKING OF PRODUCTS

11-1. BOX SPECIFICATION

- Master Carton Size : W-630 x D-630 x H-35 [mm]
- Material : Carton, AF
- + Air-cap or Bubble-warp





BMS lighting automation
<http://jeongosc.wix.com/standbyzero>

2014

LED FIXTURE